

PACKAGING AND WEIGHING OF POWDERS AND INGREDIENTS

- FROM A BULK STORAGE, A BLENDER, A SIEVE...
- IN DRUMS, OPEN BAGS OF ANY MATERIAL, OR CARDBOARD BOXES WITH BAGS,
- WITH OR WITHOUT UPSTREAM DOSING SCREW,
- IN DRY OR WET ENVIRONMENTS

The seal during filling is ensured by the expanding seal on the bagging head.

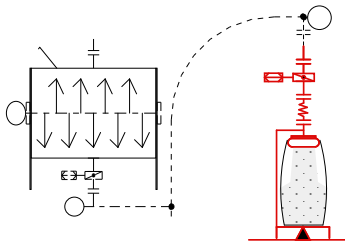
Packages from 5 to 30 kg
Up to 60 bags per hour

Weighing accuracy according to feed type
Minimum display accuracy +/- 10 g

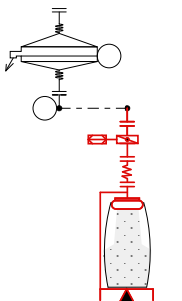
Optional NAWI weighing unit (non-automatic weighing instrument)
approved for commercial weighing

EXAMPLES OF IMPLEMENTATION

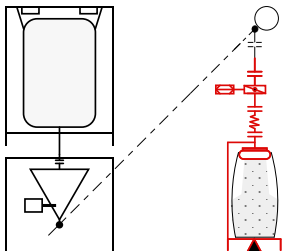
Flexible screw type T12
underneath the mixer



Recovery under
screw screener
hose type T54R



Recovery with big bags by
screw hose type T14



PRODUCTIVITY

- Automates repetitive tasks: packaging of finished products or preparation of pre-doses
- Minimises cleaning time
- Frees up operator time: bag holding and automatic weighing
- Tight connection between the filling head and the bag to avoid material loss

HEALTH AND SAFETY

- Disassembles completely without tools for easy cleaning
- Can be cleaned wet or dry
- Reduces dust in the workshop
- Reduces drudgery and risks for operators

QUALITY

- Protects the product from external contamination
- Preserves the bag sealing area
- All stainless steel machine with food seals

Compatible



DESCRIPTION

Ref.: EE010C (size S) EE011C (size L)



**CONTAINED
WEIGHER
BAGGER**

VALVE ASSEMBLY VAPDER2-E Ø150

- 1- Valve body Ø150 mm clamped between 2 truncated flanges (the whole stainless steel). Stainless steel butterfly mounted on reinforced sealing ring, white NBR food grade peripheral seal.
- 2- Anodised aluminium pneumatic cylinder controlled by a monostable 24 VDC solenoid valve.
- 3- Limit switch box for double feedback and visual position indicator (open/closed).

FILLING AND SEALING ASSEMBLY

- 4- Flexible hygienic sleeve Ø150 mm x h 150 mm x thickness 0.3 mm.
- 5- Control knob for inflating and deflating the expansion joint.
- 6- Bagging head including:
 - A Ø250 mm stainless steel welded outlet chute (other diameters optional) fixed to the bracket with a collar and seal.
 - Expandable seal made of food-grade material to ensure that the bag remains watertight during filling.
- 7- Stainless steel pneumatic box integrated in the bracket with pressure gauge (0.1 to 2.5 bar) and pressure regulator with safety valve.

304 (316L on request) stainless steel chute and enclosure, continuous welds inside and outside, joints outside, seals in compliance with CE 1935/2004. The chute and seal can be removed without tools. The box is to be supplied with dry and de-oiled air at 6 bars max. Indicative consumption per inflation: from 0.015 to 0.05 Nm³.

BRACKET AND BAG TRAY

- 8- Stainless steel bracket placed on the weighing unit, supporting the bagging head and the pneumatic box, 2 sizes (S-L).
- 9- Height-adjustable bag tray to fit the length of the bag (50 mm steps).
- 10- Stainless steel housing with anti-retention slopes.

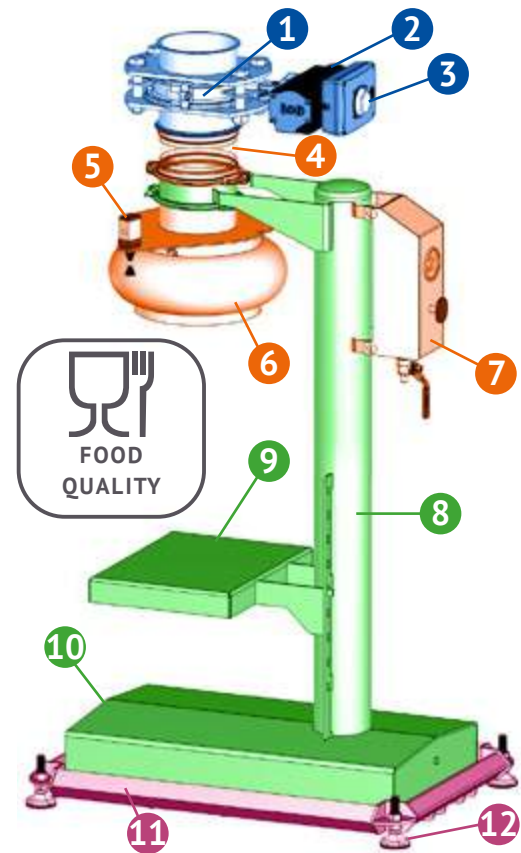
304 (316L on request) stainless steel construction, closed tube, continuous welds inside and out.

WEIGHING UNIT

- 11- Base frame for the weighing system including 4 PRECIA MOLEN stainless steel sensors (capacity 30 kg) and an electrical junction box.

Frame in stainless steel 304, inclined profiles (hygienic design), continuous welds inside and outside. Also supplied for integration in the electrical cabinet: Precia Molen weight transmitter with display and Ethernet output card. The box is not supplied.

- 12- 4 adjustable stainless steel feet.



OPTIONS

- **CN014C** • Foot switch for inflation/deflation of the seal instead of the manual pull cord (5).
- **Bagging head (6)** of another diameter (instead of Ø250 mm):
 - **EK002C** Ø200 mm | • **EK003C** Ø300 mm | • **EK004C** Ø350 mm
- **Additional bagging head (6)** with pull tab, without case:
 - **ET006C** Ø200 mm | • **ET007C** Ø250 mm | • **ET008C** Ø300 mm | • **ET010C** Ø350 mm
- **EK005A** • Retaining ring for large bags.
- **VP001A** • Unclogging vibrator on bagging head (not controlled).
- **EA007C** • Roller table to replace the bag tray (9).
- **PK016C** • NAWI commercial weighing module including LNE file, **without commissioning**.
- **PK006C** • NAWI commercial weighing module including LNE file **and commissioning on site**.
- Lesser cost **non supply of the valve** (CV001C)
- **ATEX 22 compliance**: on request.

INDICATIVE DIMENSIONS (IN STANDARD VERSION)

**CONTAINED
WEIGHER
BAGGER**



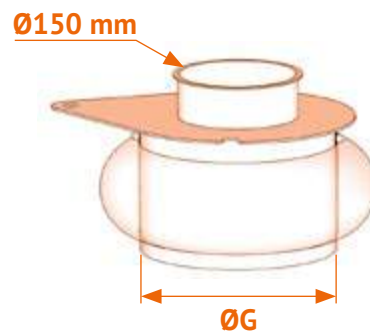
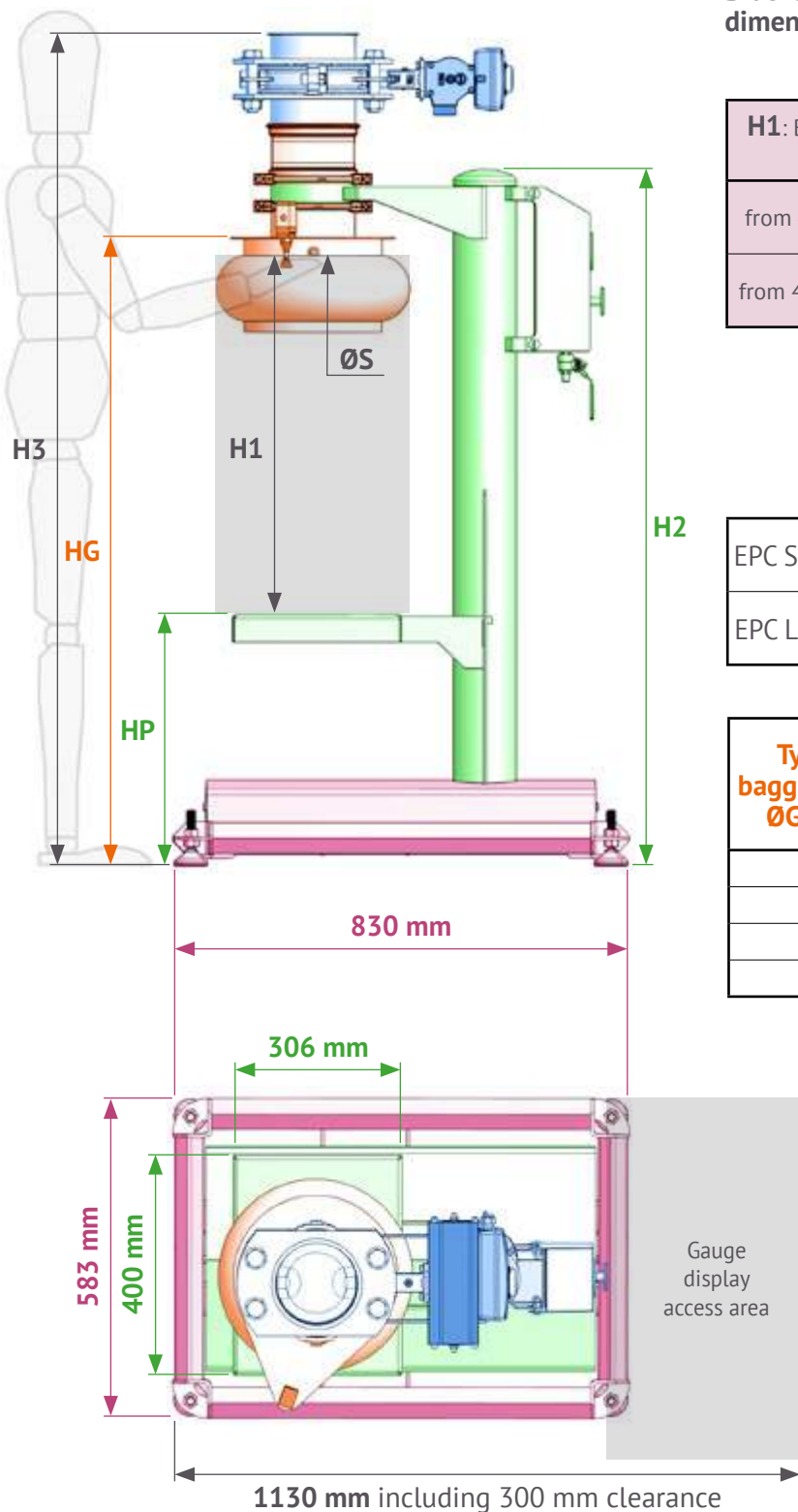
Bracket and Head selection guide according to bag dimensions:

	ØS: Bag diameter wide open (mm)			
H1: Bag Height (mm)	from 230 to 290	from 280 to 340	from 330 to 390	from 380 to 440
from 450 to 850	EPC S Head 200	EPC S Head 250	EPC S Head 300	EPC S Head 350
from 450 to 1000	EPC L Head 200	EPC L Head 250	EPC L Head 300	EPC L Head 350

	Bag height H1 (mm)	Bracket Height H2 (mm)	Overall height H3 (mm)	Tray Height HP (mm)		Chute Height HG (mm)
				Min	Max	
EPC S	from 450 to 850	1270	1520	258	658	1145
EPC L	from 450 to 1000	1420	1670		808	1295

Type of bagging head ØG (mm)	Bag Diameter Wide Open ØS (mm)
200	from 230 to 290
250	from 280 to 340
300	from 330 to 390
350	from 380 to 440

Indicative weight of the set: 75 Kg



34 rue de la croix de fer - iX CAMPUS
78100 Saint Germain en Laye - France
Phone +33 184 730 939 - contact@transitube.com

