



FOR TIPPING BAGS AND SECURE YOUR RAW MATERIALS

- GUARANTEE NO FOREIGN BODY*
- A MAXIMUM GRANULOMETRY SIZE
- BEFORE THE USE OF RAW MATERIAL

Ultra-compact design, to empty bags on the ground (without step or walkway) with enough hopper capacity .



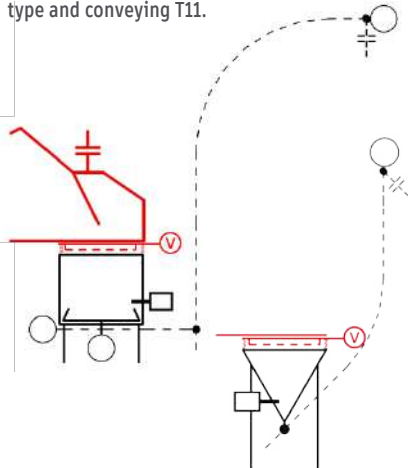
For tipping bags model T and V Ø800 mm
 For existing or new stations
 Easy access and dismantling of sieve with secured version with or without articulated hood
 Mesh 3 mm (others** in option)
 Atex 22 (21 in option)
 Ex. products : flour, sugar, starch, milk powder...

Version with hood on T-bag empties not supplied.

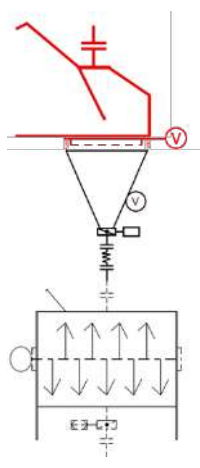
*Foreign body with higher granulometry size than the installed mesh grid
 **The choice for the grid impacts directly the maximum output, which reduces as thinner is the grid

SKETCH EXAMPLES

Version hood with V hopper type and conveying T11.



Version tablet with hopper T type and conveying T14.



Version hood on hopper for mixer charging.

SECURITY

- Guarantee de food safety by stopping the foreign bodies*
- Protects the operators : electrical security detecting the grid position
- Reduces penibility : charging at a perfect height with limited dust contamination

HYGIENE

- Easy access for cleaning thanks to the articulation and grid removal
- Conforming Food quality exigences

PRODUCTIVITY

- In-line sieving before process introduction
- Reduces production stops
- No product wastes due to non conformity of foreign bodies
- Easy implantation in existing lines

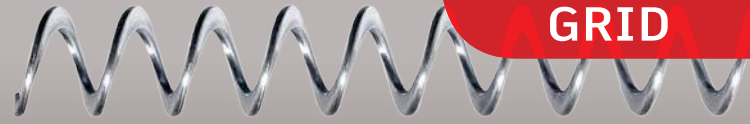


DESCRIPTION

VIBRATING SECURITY GRID

Ref :
In option with new tipping bag
Delivered for existing line

Tablet	Hood
CHA060C	CHH060C
CHA061C	CHH061C



VIBRATING SUPPORT

- 1- Adjustable vibrating support grid.
- 2- Vibrator 230/400V tri - 50Hz - IP 55 - ATEX22.
- 3- Flexible hygienic pipe with counter flanges for hermetical seal between sieve and hopper.
- 4- 3 vibrating compensators.

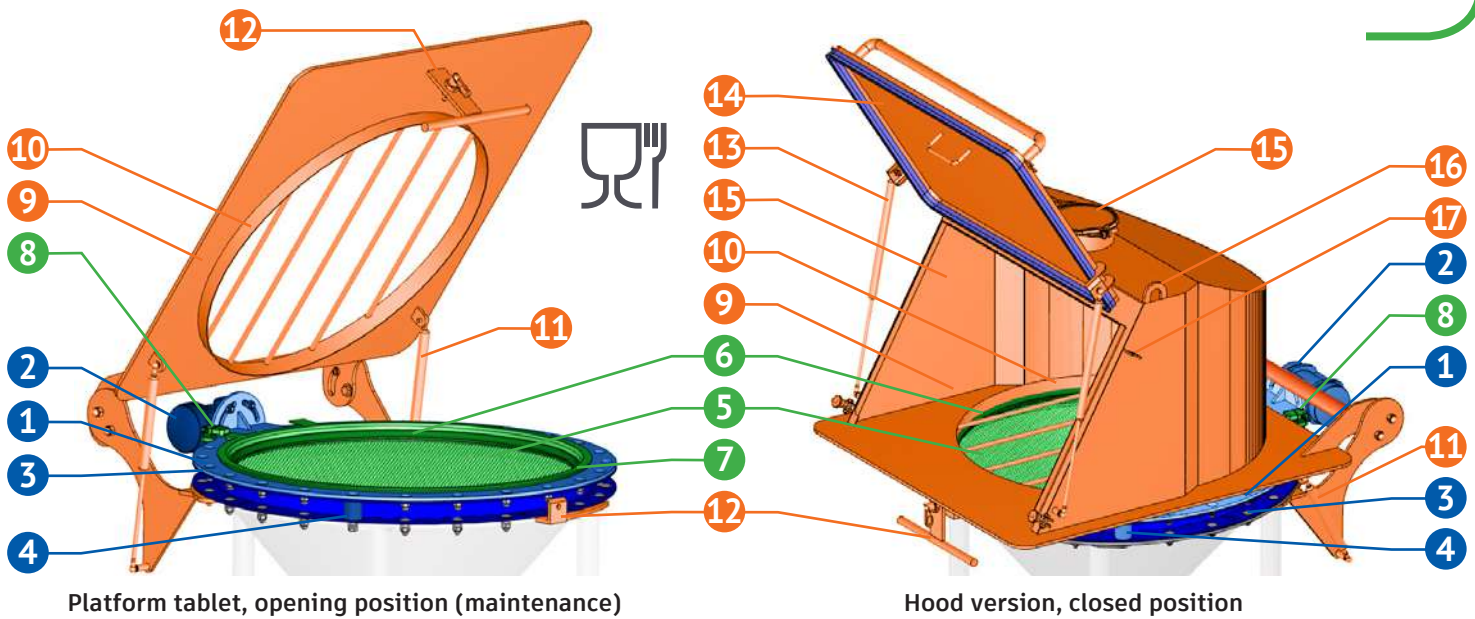
Blue seal, Food grade CE 1935/2004. Construction Stainless steel 304 (316L on demand).

SIEVE Ø750 MM REMOVABLE, MAGNETIC STAINLESS STEEL 430

- 5- Mesh 3 mm (other in option*) stucked on the frame for easy cleaning and limiting residual areas.
- 6- O-Ring for sealing between tablet and sieve.
- 7- O-Ring for sealing between sieve and vibrating support.
- 8- Electrical security or sieve position detection.

Seals and stick are CE 1935/2004 Food grade quality.

* The mesh size impacts the reachable output. Thiner mesh = lower output



ARTICULATED PLATFORM

- 9- Articulated supporting bag platform . Following version : with dedusting hood welded on the platform.
- 10- Bag supporting and protection of the sieve
- 11- 2 cylinders for articulation assistance and to maintain in the open position.
- 12- Lockable in closed position

Version with hood :

- 13- 2 cylinders to maintain in open position when charging.
- 14- Charging door with 2 handfl (int. and ext.) with hermetical seal.
- 15- Plug Ø150 mm with U-shaped seal (for global dust collection coupling), closed with plate collar and seal.
- 16- Handling rings.
- 17- Detection support of opening door pfor auto run of the dedusting unit (detector in option) .

Construction stainless steel 304 (316L on demand). Food grade seals CE1935/2004.

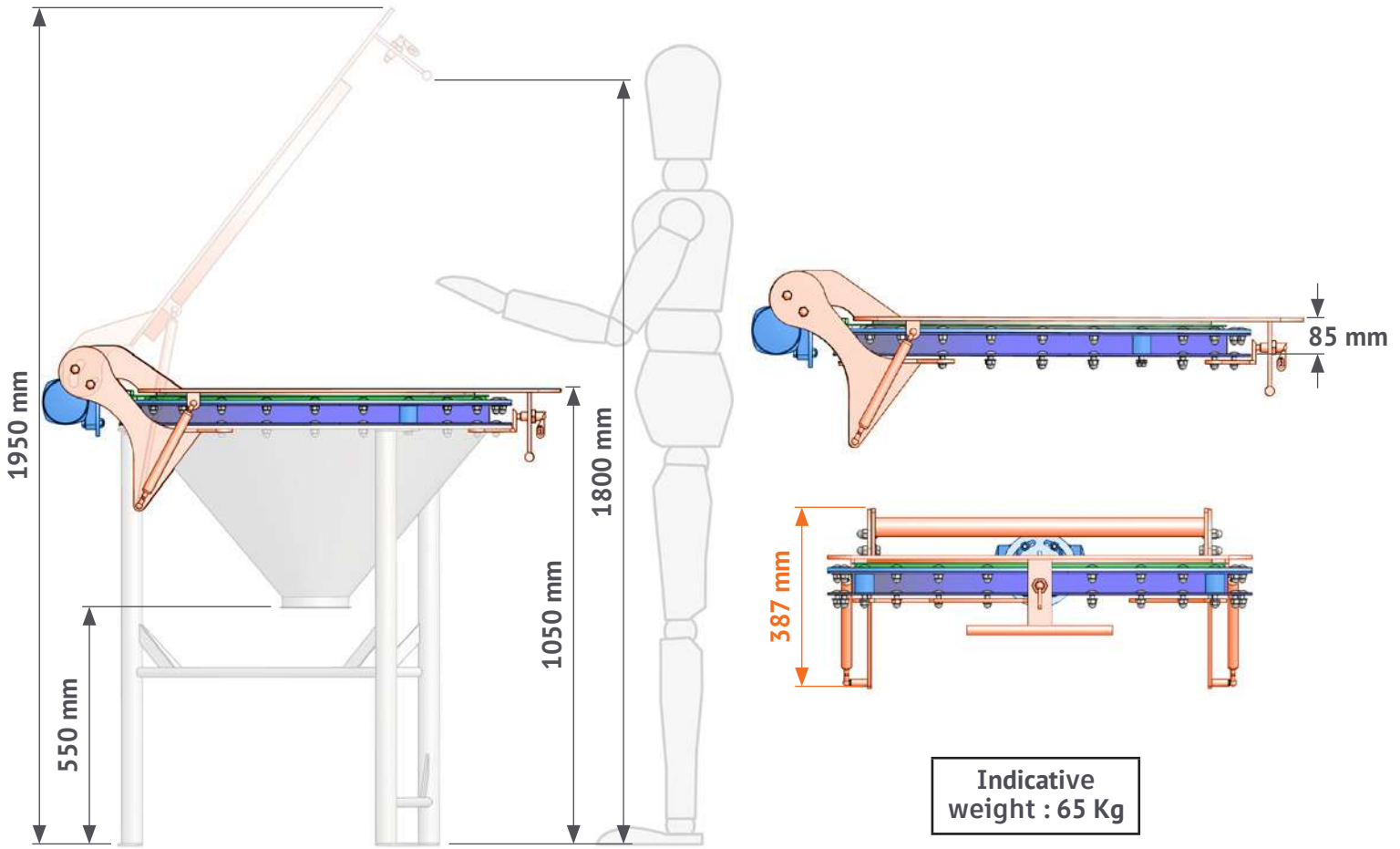
OPTIONS

- VE006A · Vibrator (2) all stainless steel no ATEX (ATEX on demand)
- Other sieve mesh (5) : • TTA002C mesh 2 mm | • TTA004C : mesh 4 mm
- Complementary sieves (5) : • TTA002A mesh 2 mm | • TTA003A : mesh 3 mm | • TTA004A : mesh 4 mm
- TK125C · No security on sieve (8)
- TK126C · Electrical security to detect the hood or platform position
- TA025C · Filtration textil instead of closing plate (15)
- DDI010C · Open door detection on hood (14) in case of coupling to a centralized dedusting
- Certification ATEX21 on demand

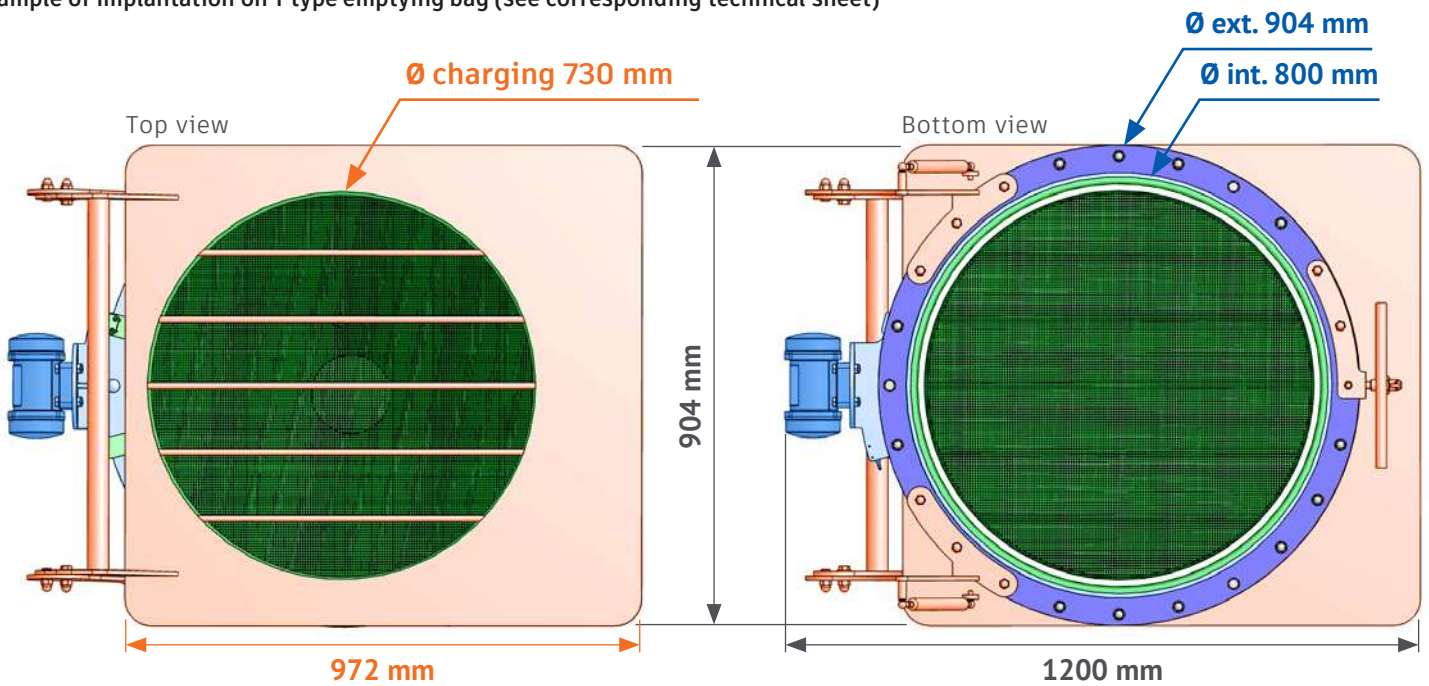


INDICATIVE DIMENSIONING Platform version

VIBRATING
SECURITY
GRID

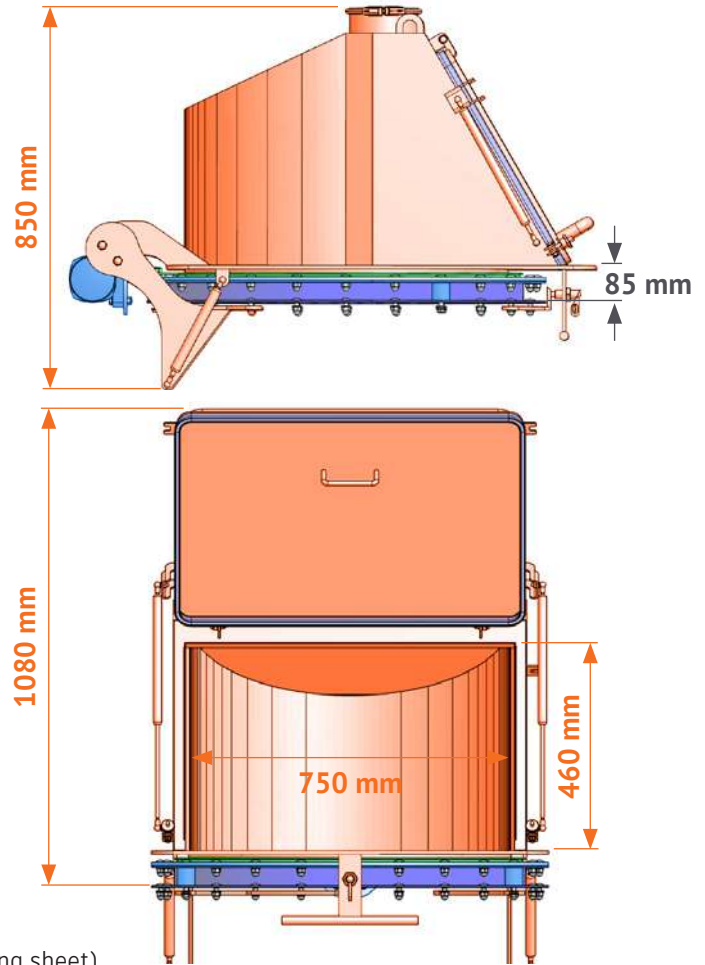
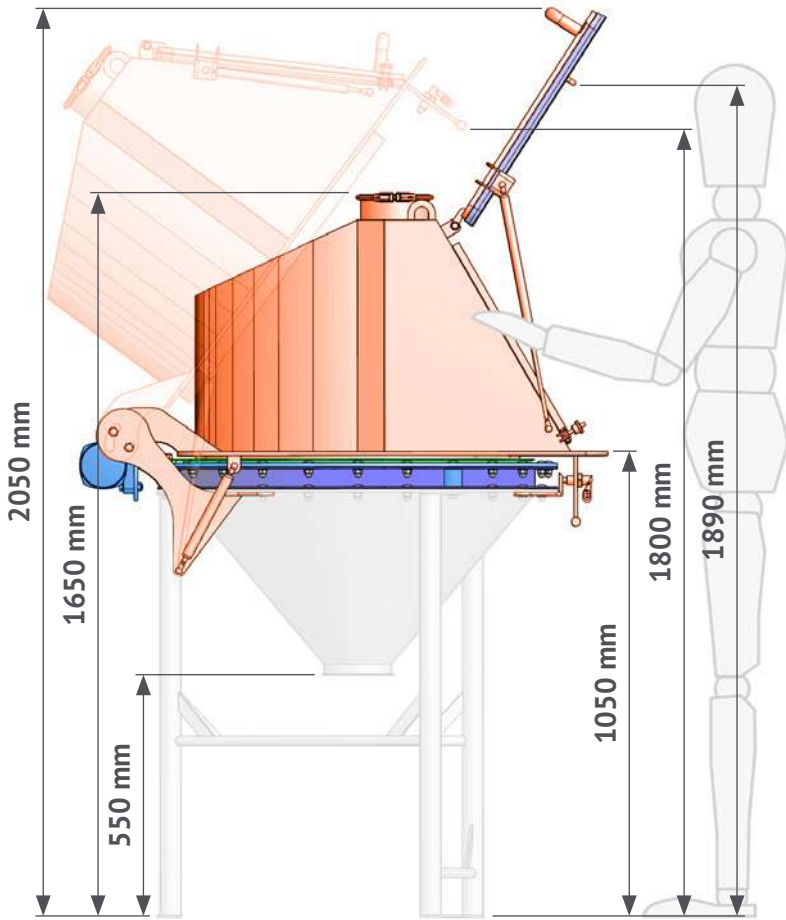
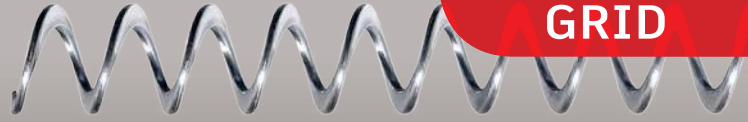


Example of implantation on T type emptying bag (see corresponding technical sheet)



INDICATIVE DIMENSIONING Hood version

**VIBRATING
SECURITY
GRID**

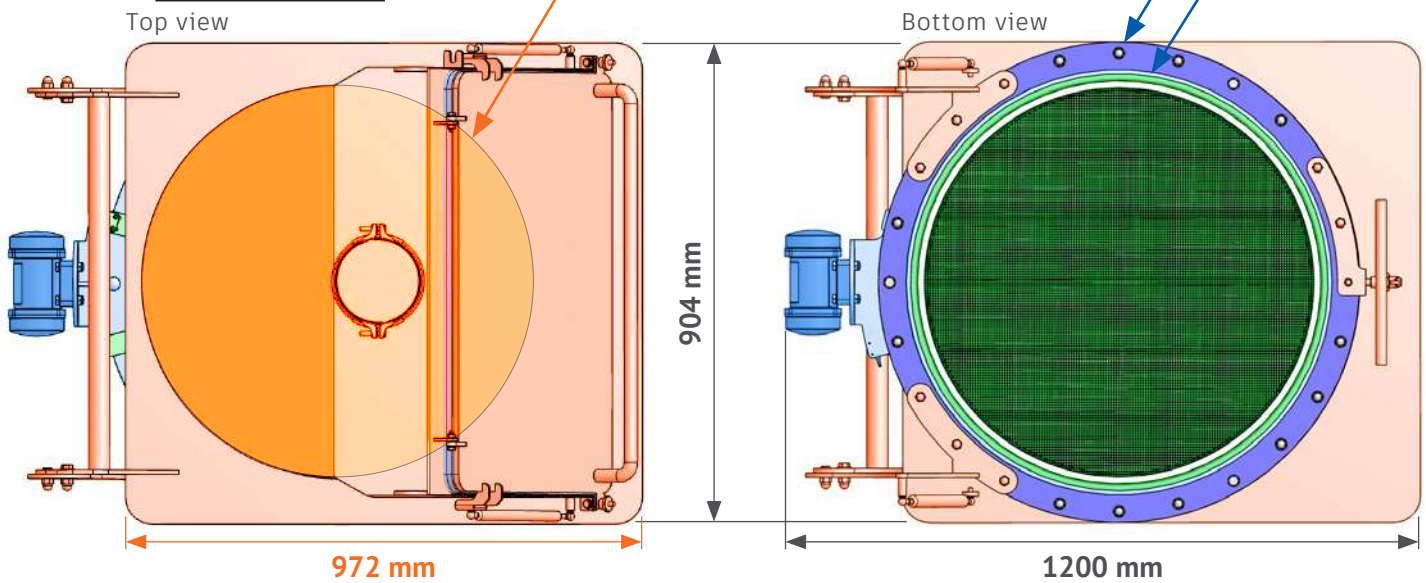


Example of implantation on emptying bags T type (see technical corresponding sheet)

Indicative weight : 95 Kg

Ø charging 730 mm

Ø ext. 904 mm
Ø int. 800 mm



34 rue de la croix de fer - iX CAMPUS
78100 Saint Germain en Laye - France
Phone +33 184 730 939 - contact@transitube.com

